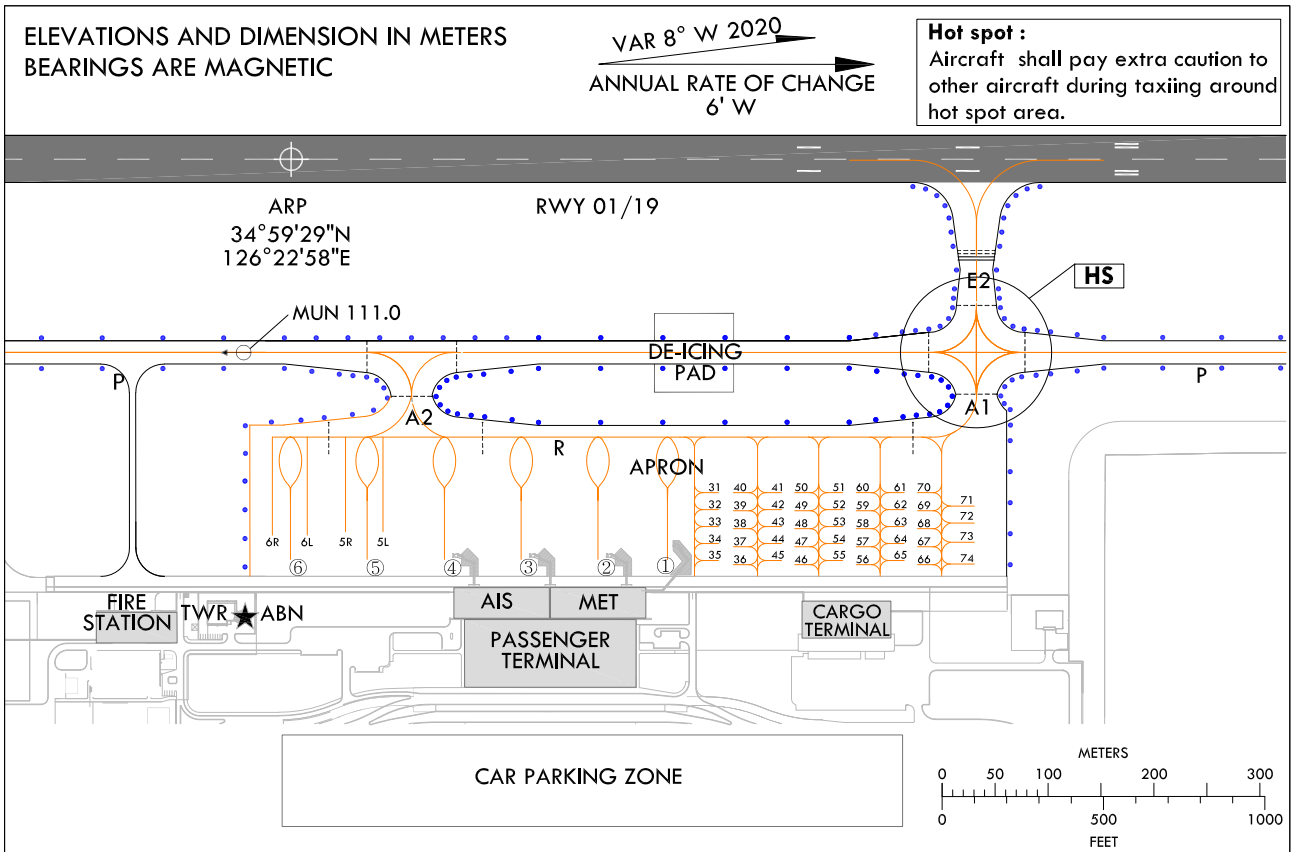


AIRCRAFT PARKING /
DOCKING CHART - ICAO

APRON ELEV 12 m

TWR 118.25 118.85 321.025
GND 121.7 317.45

MUAN / Muan Intl



STANDS NR	INS COORDINATES FOR AIRCRAFT STANDS(WGS-84)	ELEV (AMSL)	STANDS NR	INS COORDINATES FOR AIRCRAFT STANDS(WGS-84)	ELEV (AMSL)
1	34°59'40.36"N 126°23'12.29"E	11.72	52	34°59'45.93"N 126°23'11.10"E	11.82
2	34°59'38.53"N 126°23'12.65"E	11.68	53	34°59'45.93"N 126°23'11.74"E	11.87
3	34°59'36.18"N 126°23'12.99"E	11.53	54	34°59'45.93"N 126°23'12.37"E	11.93
4	34°59'33.83"N 126°23'13.00"E	11.44	55	34°59'45.94"N 126°23'13.00"E	12.02
5	34°59'31.47"N 126°23'13.03"E	11.42	56	34°59'46.35"N 126°23'13.15"E	12.10
5L	34°59'31.96"N 126°23'11.83"E	11.21	57	34°59'46.35"N 126°23'12.48"E	11.97
5R	34°59'30.88"N 126°23'11.84"E	11.11	58	34°59'46.34"N 126°23'11.81"E	11.89
6	34°59'29.12"N 126°23'13.05"E	11.22	59	34°59'46.34"N 126°23'11.14"E	11.84
6L	34°59'29.64"N 126°23'11.86"E	11.02	60	34°59'46.33"N 126°23'10.47"E	11.90
6R	34°59'28.57"N 126°23'11.87"E	10.95	61	34°59'47.81"N 126°23'10.46"E	11.99
31	34°59'42.13"N 126°23'10.51"E	11.68	62	34°59'47.81"N 126°23'11.09"E	11.94
32	34°59'42.13"N 126°23'11.14"E	11.65	63	34°59'47.81"N 126°23'11.72"E	12.00
33	34°59'42.13"N 126°23'11.77"E	11.74	64	34°59'47.82"N 126°23'12.35"E	12.05
34	34°59'42.14"N 126°23'12.40"E	11.81	65	34°59'47.82"N 126°23'12.98"E	12.11
35	34°59'42.14"N 126°23'13.03"E	11.89	66	34°59'48.23"N 126°23'13.14"E	12.16
36	34°59'42.57"N 126°23'13.19"E	11.93	67	34°59'48.23"N 126°23'12.47"E	12.07
37	34°59'42.57"N 126°23'12.52"E	11.85	68	34°59'48.22"N 126°23'11.80"E	12.01
38	34°59'42.56"N 126°23'11.85"E	11.76	69	34°59'48.22"N 126°23'11.13"E	11.96
39	34°59'42.56"N 126°23'11.18"E	11.67	70	34°59'48.22"N 126°23'10.46"E	12.01
40	34°59'42.56"N 126°23'10.51"E	11.70	71	34°59'50.19"N 126°23'10.83"E	12.05
41	34°59'44.03"N 126°23'10.49"E	11.78	72	34°59'50.19"N 126°23'11.58"E	12.13
42	34°59'44.03"N 126°23'11.13"E	11.72	73	34°59'50.20"N 126°23'12.33"E	12.16
43	34°59'44.04"N 126°23'11.76"E	11.80	74	34°59'50.20"N 126°23'13.08"E	12.24
44	34°59'44.04"N 126°23'12.39"E	11.88			
45	34°59'44.04"N 126°23'13.02"E	11.95			
46	34°59'44.47"N 126°23'13.17"E	11.97			
47	34°59'44.46"N 126°23'12.49"E	11.89			
48	34°59'44.46"N 126°23'11.83"E	11.80			
49	34°59'44.46"N 126°23'11.16"E	11.73			
50	34°59'44.45"N 126°23'10.48"E	11.79			
51	34°59'45.93"N 126°23'10.47"E	11.88			

RWY	THR coordinates (WGS-84)	BEARING STRENGTH
01	34°58'44"N 126°22'58"E	- PCN 78/F/C/X/T ASPHALT
19	35°00'14"N 126°22'58"E	- PCN 81/R/C/W/T CONCRETE (150 m from RWY THR)

LEGEND	
•	TAXIWAY LIGHT
≡≡≡	RUNWAY HOLDING POSITION
---	INTERMEDIATE HOLDING POSITION
A1	TAXIWAY
①	AIRCRAFT STAND
→	TAXI ROUTES
MUN 111.0	VOR CHECK POINT AND FREQ
HS	HOT SPOT

STANDS NR	STAND AVAILABILITY
1	B737 MAX9, A321 NEO
2	B767-400, B767-300
3 to 6	B747-400, B777-200
5L	B737-900, A320-200
5R	ERJ - 145
6L	ERJ - 145
6R	B737-900, A320-200
31 to 70	DA42, PA34
71 to 74	C208B, CARV - II

TWY	WIDTH	Strength and Surface
P	23 m	PCN 81/R/C/W/T CONCRETE
E1	28 m	
E2	33 m	
E3	28 m	
A1	39 m	
A2	40 m	
R	23 m	
G	23 m	PCN 32/R/C/W/T CONCRETE

TAXIWAY EDGE LIGHTS ON ALL TAXIWAYS.
* ISOLATED AREA : TWY E1

Change : Establishment of ACFT stands NR. 5L, 5R and Information of ACFT stands NR. 1~2, 6R.